

Murales dedicato a Sergio Leone Centocelle Roma



Sergio Leone Room

Addis Ababa
Alle School of Fine Art and Design

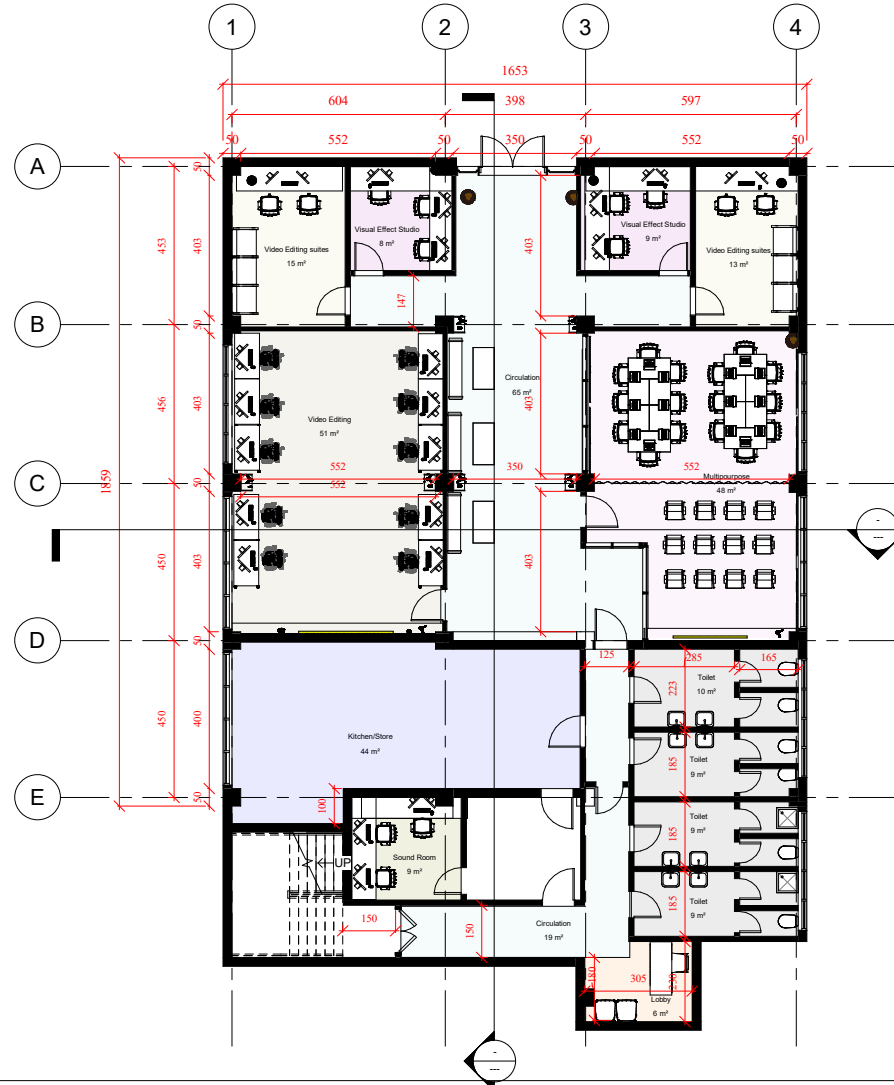
Project Plan Designed by
Arch. Abel Getachew

Concept Design by Marta Zani
and Arch. Lucilla Furfaro

rev. 1/04/2024

Pianta N.1

Project Plan
designed by
Arch. Abel Getachew
a cui corrisponde il
Preventivo allegato



Client - Alle School of Fine Arts and
Design - Addis Ababa University

Project-Sergio Leone Editing Room
Location - Addis Ababa

Designed by : Abel Getachew (PPAR 2000)

Drawn by: Mama Traore
Checked by: Abel Getachew

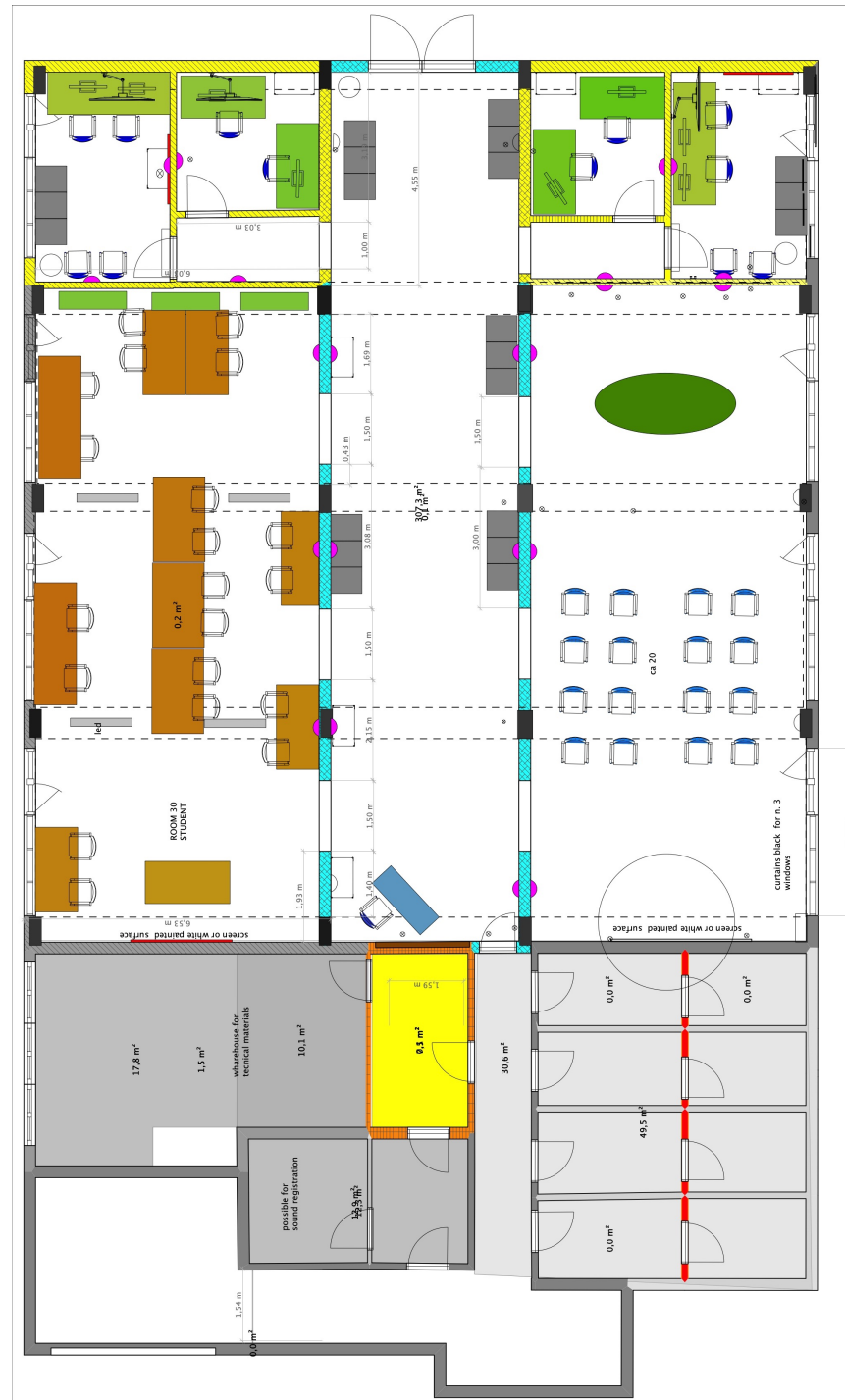
Pianta.N2

Designed by Marta Zani

La parte in giallo è come il progetto precedente ma in muratura invece che in cartongesso con lana di vetro.

La parte in azzurro consiste in delle spallette ai lati dei pilastri con apertura libera da chiudere eventualmente con porta vetrata. (sostituisce le pareti del corridoio a sinistra in cartongesso e a destra in cartongesso e vetrata)

-Eliminazione della risega all'entrata .



Corridor- Entrance
and Circulation Area



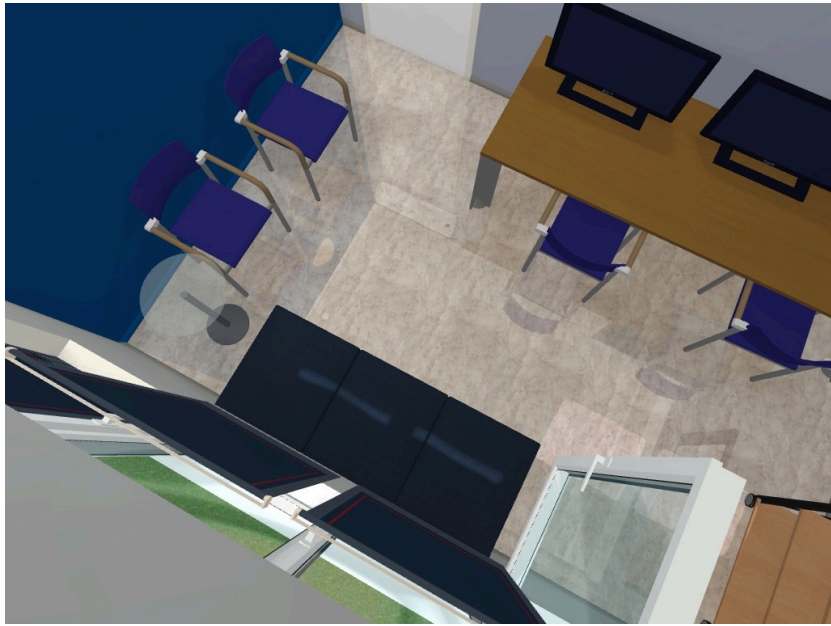
Multifunctional area



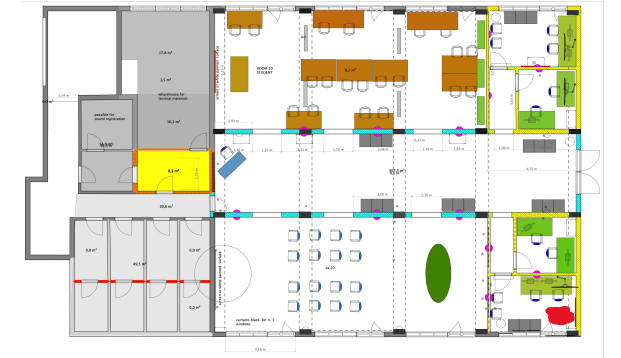


EditingRoom
(Big room
school)



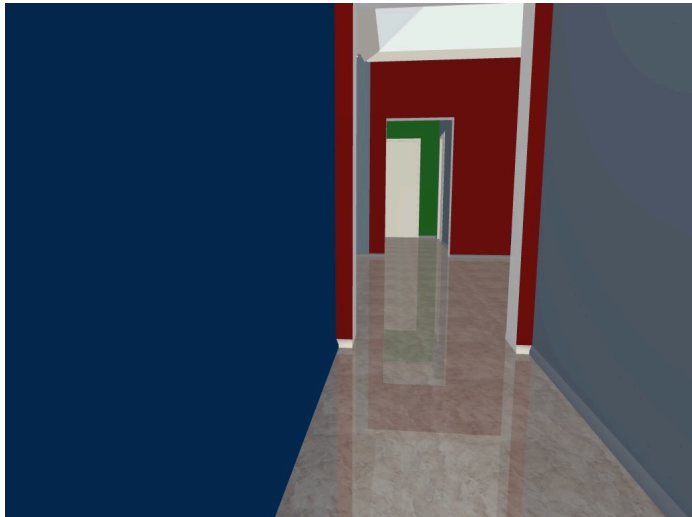


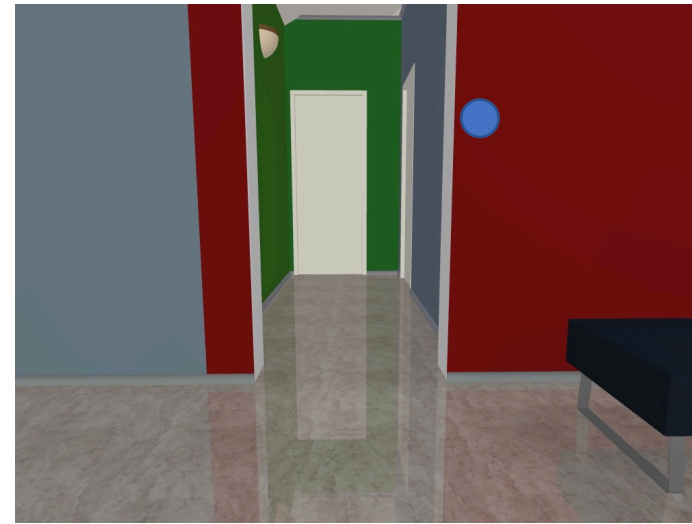
Editing Large Room N. 1 (*behind the multifunctional room*)



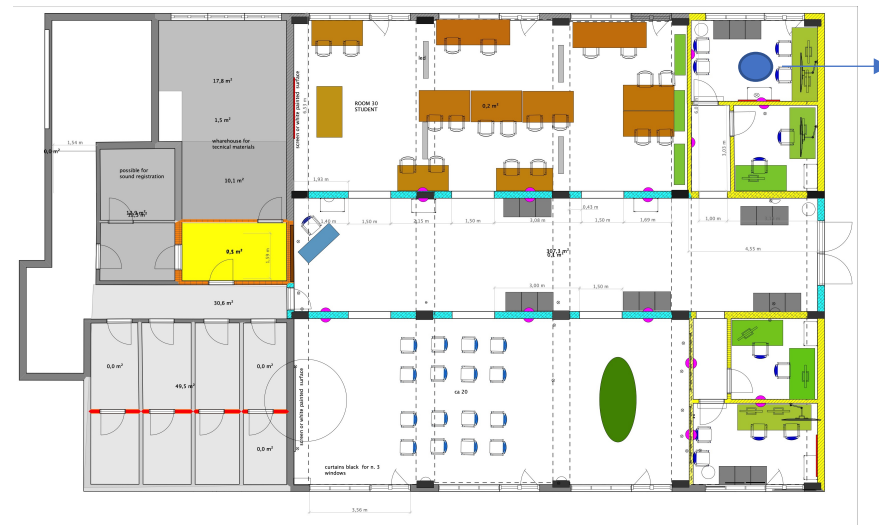
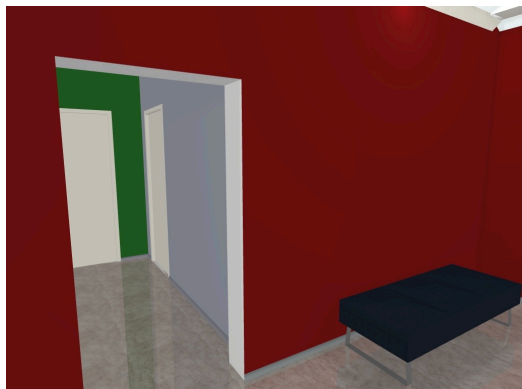


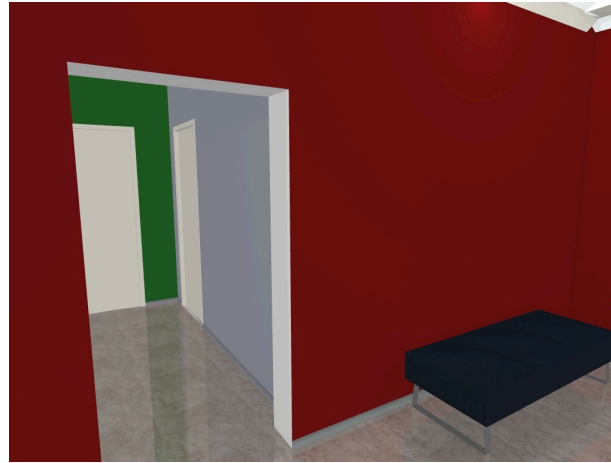
Editing Small Room and Corridor n.1





Large
Editing
Room n. 2





Small editing room n. 2

